

International course

# Governance of landscapes, forests and people



Towards innovative arrangements for inclusive decision making at landscape level  
Indonesia, 24 August - 04 September 2015

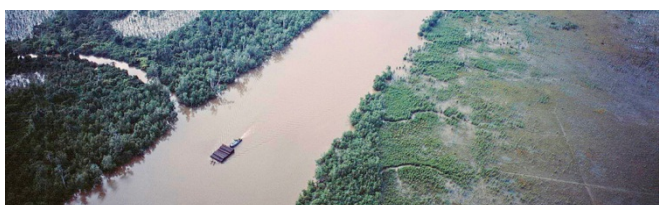


## From forests to landscapes

Forested landscapes worldwide are increasingly integrated in global processes of trade, market development, resource exploitation and climate change. This is why landscapes are increasingly considered to be appropriate levels to negotiate land use options. Within forested landscapes food production, commodity agriculture, biodiversity, resource extraction and other land uses are competing for space. Negotiation and conflict mediation between stakeholders and their interests are therefore increasingly needed. A new breed of professionals is high in demand. Are you ready to be challenged?

**Landscapes and governance** Over the last decade 'governance' as a term has gained wide currency in relation to public and natural resources management. Governance can be described as a process in which policy development and implementation is based on cooperation between representatives from the government, the market and civil society. Together they operate through mixed public and private networks and arrangements, within the decentralised administrative system of states.

Landscapes however, are rarely recognised as a formal level within the decentralised administrative system of states. Therefore, it is often hard to tally formal planning and decision making processes with the specific dynamics of landscapes. By lack of formal governance



Fee:	2,300 Euro
Deadline subscription:	22 Juni 2015
Deadline NFP fellowships:	<b>24 March 2015</b>



structures, landscape governance is therefore characterised as being a shared responsibility of civil society groups, private sector actors and local governments. In many places, these actors are experimenting with their newly assigned roles as cop-developers and implementers of landscape governance. Examples of such experiments are certification schemes, corporate social responsibility (CSR), citizen's initiatives and different forms of payment for environmental services (PES). Much is expected from these public-private initiatives, yet little is known about their level of transparency, accountability and decision making structures. Professionals who are able to facilitate these often complex multi-stakeholder processes are in high demand. Are you ready to become one?

## What will you learn during this course?

This course challenges forest and nature management professionals to adopt an integrative perspective, looking beyond the forest boundaries, taking into account cross-sectoral concerns and working in multi-disciplinary teams. During the course we will focus on the development of new institutional arrangements at landscape level, including multi-stakeholder platforms and networks, and their financial support mechanisms. We will visit a landscape where PES arrangements are implemented. Here, we will analyse how these arrangements steer landscape dynamics, and how they facilitate processes of stakeholder dialogue on the ground.



---

## After the course you will be able to:

- critically examine landscape dynamics at various levels and scales
- understand and assess the implications of up-scaling participation to working with diverse stakeholder groups at landscape level
- identify, develop and support new governance arrangements at landscape level, and assess the institutional capacity they need to be effective
- assess your own role as process manager, and further develop your competencies as a facilitator of landscape governance processes on the ground.

## Using a variety of training methods

This unique course is organised in close collaboration with CIFOR and ICRAF, both having vast experience in forest and society related research. The Wageningen UR Centre for Development Innovation has a vast experience in participatory and hands-on professional training. Together, we offer you a stimulating learning environment, in which you will be updated on the state-of-the-art in forest- and landscape related research. Moreover, you will be challenged to share your own work and reflect on your current practices together with your course mates from all over the world.

## Are you eligible to take part in this exciting course?

If you are an experienced professional with several years of working experience in the fields of natural resources management, forestry, agriculture, rural development, rural livelihoods, sustainable development, spatial planning, governance, and other related areas,



---

## Further practical information

- **Application**, the procedure is:
  - 1) Apply at the website of CDI, Wageningen UR**: [www.wageningenur.nl/cdi](http://www.wageningenur.nl/cdi). You will receive a confirmation and more information within a week. Early application is recommended as some procedures to finalise subscription (f.e. funding, visa) can take some time.
  - 2) CDI** is unable to assist you in obtaining financial support, however if you want to apply for a **NFP/MENA Fellowship**, CDI will provide you with the full instructions and the web address for registration in **ATLAS**. ATLAS is the online application form for an NFP / MENA Fellowship. You can check the eligibility at [www.nuffic.nl/nfp](http://www.nuffic.nl/nfp) or [www.nuffic.nl/mena](http://www.nuffic.nl/mena). A limited number of scholarships is available. As this application process takes time and requires several documents, we recommend that you **start as soon as possible**.
- **NFP / MENA Fellowships include** travel and full board and lodging.
- **Fee** includes all course related costs (materials, excursions, administration).
- Participants will be awarded with a **Certificate of attendance**. The programme of the course might be changed to incorporate new insights

**Proven concepts & state-of-the-art science and methodology** For an overview of all the courses visit our website: [www.wageningenur.nl/cdi](http://www.wageningenur.nl/cdi). More than 20,000 participants have gained access to the latest insights from research and best practices. From September 2013, all participants of our courses offered in Wageningen will use tablets as a learning tool.

